

NBSAP REVIEW GUIDELINES OVERVIEW

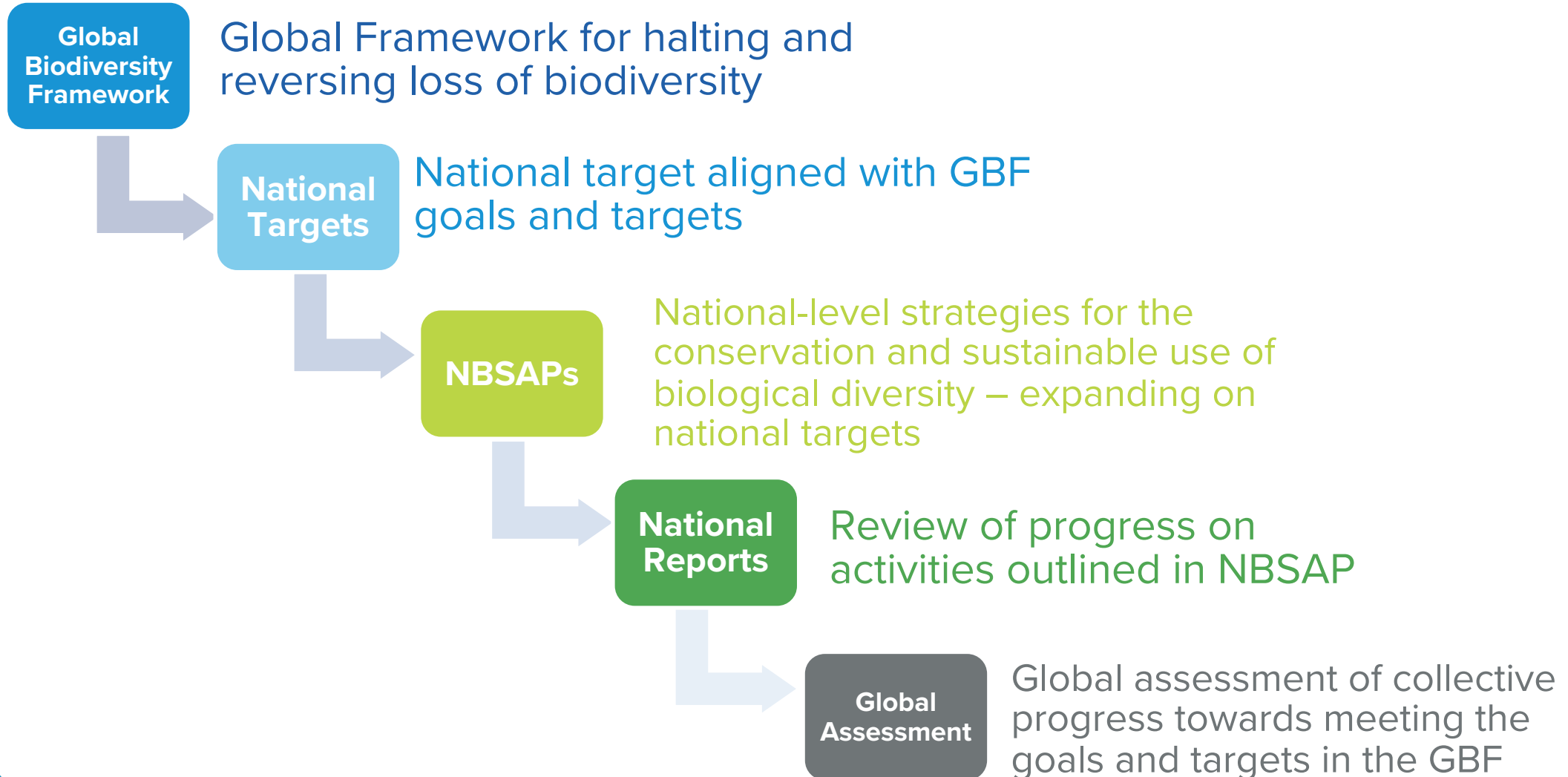
WORKSHOP TO REVIEW AND ALIGN THE NATIONAL BIODIVERSITY STRATEGY AND ACTION PLAN (NBSAP) TO K-M GLOBAL BIODIVERSITY FRAMEWORK AND TARGETS SETTING

7-11 AUGUST 2023

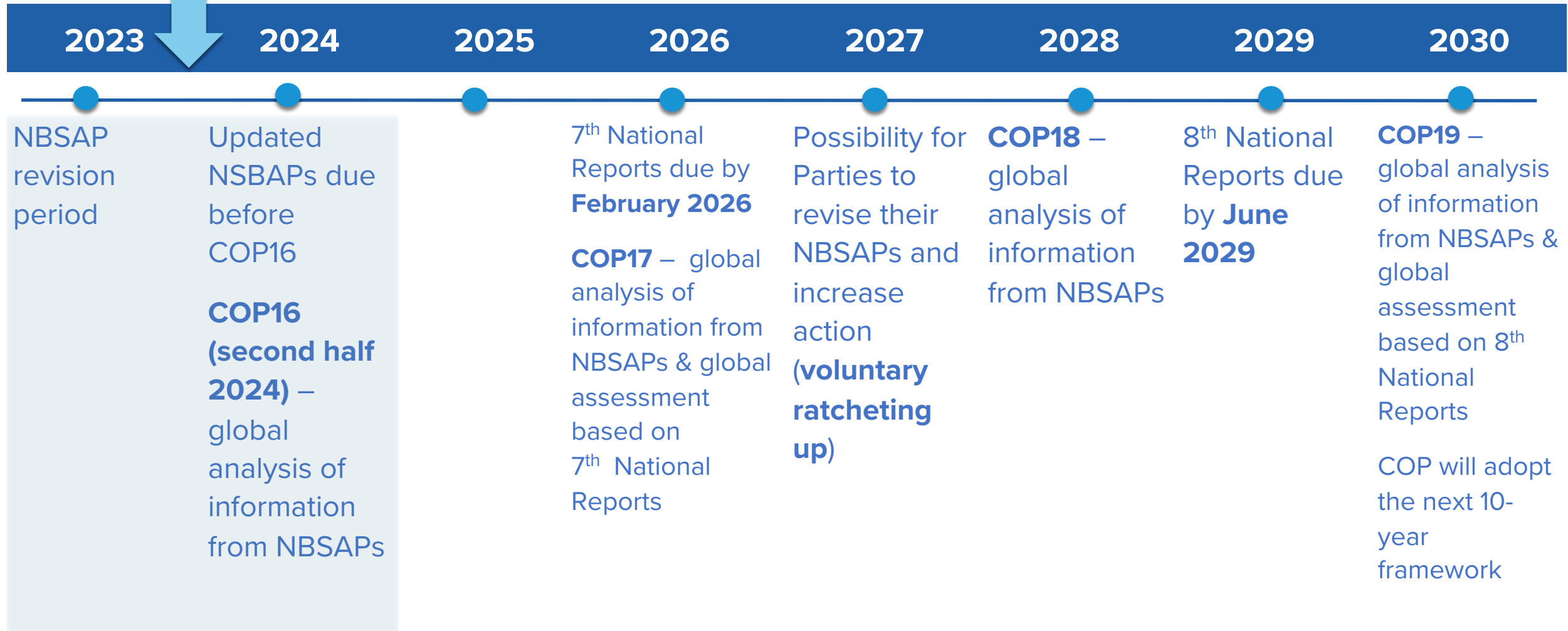
CONSERVATION
INTERNATIONAL



GBF IMPLEMENTATION PROCESS



TIMELINE TO 2030



COP15 DECISION: MECHANISMS FOR PLANNING, MONITORING, REPORTING & REVIEW

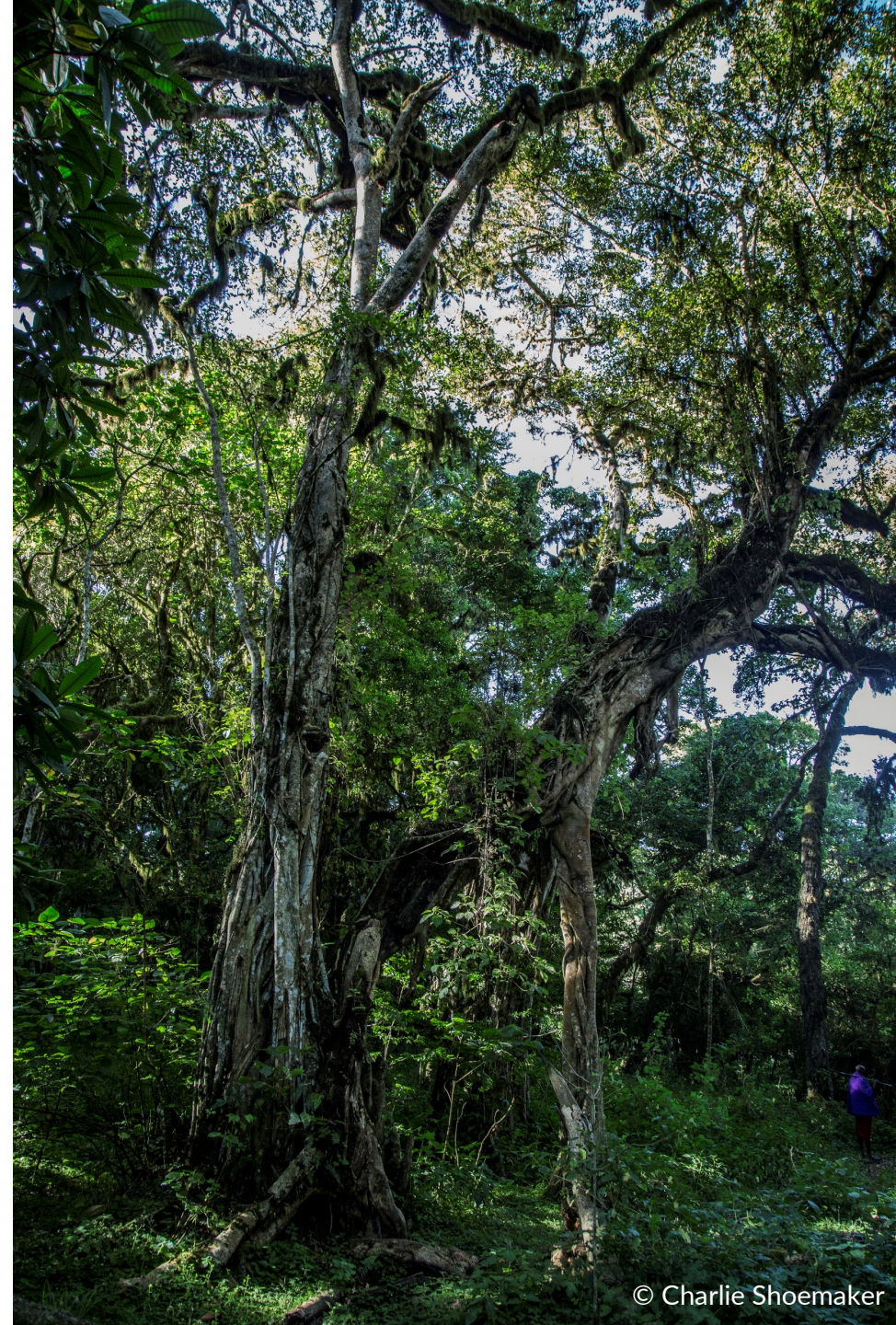
- National targets due in advance of CBD COP16 (Oct 2024) before the full NBSAP submission
- NBSAPs due in advance of CBD COP16
- Common elements:
 - (1) National targets that align with the goals and targets of the GBF**
 - NBSAPs should consider resources that are already available and distinguish between targets that have resources already and those that do not
 - Leverage commitments made through other conventions
 - (2) Actions must identify financial resources needed and any capacity gaps for implementation**
 - Development of national finance plans
 - (3) National monitoring, review, and assessment of NBSAPs**
 - Development of indicators

More in COP Decision 15/6 ([CBD/COP/DEC/15/6](#))



What are NBSAPs

- **Primary** instrument of implementation
- Instrument through which **parties establish their national goals** to contribute to the GBF
- Should involve **all levels of government** and varied **stakeholders**
- **Promote synergies** across conventions and with other multilateral environmental agreements
- Information on commitments from **non-State actors** can be included

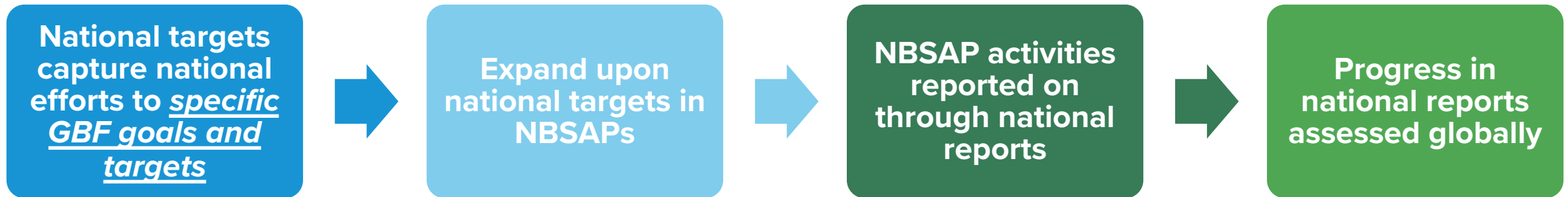


What are National Targets?

- Standalone submission
- Opportunity to:
 - Outline **new national targets**
 - **Align** with global goals and targets
 - Detail **actions** to achieve the new targets
 - Identify **indicators** to monitor progress
 - List **non-State actor commitments**
 - Assess **means and barriers** to implementation
- This information will be collected through the **online reporting tool**
- This information will also be utilized in the **national reporting template**



KEY TAKEAWAYS



Online Reporting Tool

Convention on Biological Diversity

SIGN IN

EN

CHM THE CLEARING-HOUSE MECHANISM OF THE CONVENTION ON BIOLOGICAL DIVERSITY
INFORMATION SUBMISSION SERVICE



Home Search Submit Information

CBD > CHM

The Clearing-House Mechanism of the Convention on Biological Diversity (CHM)

Information Submission Services

Sign in

[Forgot password?](#) | [Sign up?](#)

CBD Online Reporting Tool

The CBD online reporting tool enables Parties to enter, review and, when appropriate, submit information requested in the guidelines for the sixth national report (decision XIII/27).

[GO TO CBD ONLINE REPORTING TOOL »](#)

ABS Clearing-House

The Access and Benefit-sharing Clearing-House (ABS Clearing-House, ABSCH) is a platform for exchanging information on access and benefit-sharing established by Article 14 of the Nagoya Protocol, as part of clearing-house mechanism under Article 18, paragraph 3 of the Convention.

[GO TO THE ABSCH.CBD.INT »](#)

BCH Clearing-House

The Biosafety Clearing-House (BCH) is a mechanism set up by the Cartagena Protocol on Biosafety to facilitate the exchange of information on Living Modified Organisms (LMOs) and assist the Parties to better comply with their obligations under the Protocol.

[GO TO THE BCH.CBD.INT »](#)



Link: <https://chm.cbd.int/>

Template to Submit National Targets for NBSAPs

NATIONAL TARGETS		
<p>National target 1 Full name/title of national target</p>	<p>Alignment with global goals and targets</p> <p><input type="checkbox"/> Goal A</p> <p><input type="checkbox"/> Goal B</p> <p><input type="checkbox"/> Goal C</p> <p><input type="checkbox"/> Goal D</p> <p><input type="checkbox"/> Global target 1</p> <p><input type="checkbox"/> Global target 2</p> <p>...</p> <p><input type="checkbox"/> ...</p> <p><input type="checkbox"/> Enabling conditions and/or other non-target elements of the Kunming-Montreal Global Biodiversity Framework <i>(Please specify)</i></p>	<p>Degree of alignment</p> <p><input type="checkbox"/> High <input type="checkbox"/> Medium <input type="checkbox"/> Low</p> <p><input type="checkbox"/> High <input type="checkbox"/> Medium <input type="checkbox"/> Low</p> <p><input type="checkbox"/> ...</p> <p>Explanation, including which aspects of the goal or target are covered <i>(optional)</i></p> <p>_____</p> <p>_____</p> <p>_____</p>

Opportunity to develop new/revised national targets to achieve the GBF

Assess alignment between national targets and the GBF, including goals, targets, and other non-target elements



Template cont.

GLOBAL GOALS/TARGETS			
Global goals and targets	National target(s) contributing to this global target	Elements of the global targets addressed by national targets	Notes
Global goal or target (full name/title)	<i>(Automatically generated list from Party's input in the national targets table)</i>	<i>(Free text)</i>	<i>This table is to be repeated for each global goal and target Response is required for each of the global targets</i>
	Indicators used to assess the global goal or target <i>(Pre-populated from the indicators listed in the Party's input in the national targets table)</i> Is there a reference period and national target which relates to the headline indicator? If yes, Explanation (optional) _____		<i>Note that the headline indicator for each goal or target should be included in the list of indicators and associated with a relevant national target.</i>

Map national targets to GBF global goals/targets and outline the ways in which the national target addresses the global target

CBD WEBSITE RESOURCES

The screenshot shows a web browser window with the URL cbd.int/gbf/targets/2/. The page is titled "Target 2. 30% of degraded areas are under effective restoration". The left sidebar contains a navigation menu with the following items: GBF HOME, INTRODUCTORY SECTIONS OF THE GBF, 2050 VISION AND 2030 MISSION, 2050 GOALS, 2030 TARGETS (WITH GUIDANCE NOTES), IMPLEMENTATION AND SUPPORT MECHANISMS, RESPONSIBILITY AND TRANSPARENCY, COMMUNICATION, EDUCATION, AWARENESS AND UPTAKE, and RELATED DECISIONS. The main content area features a heading "Target 2. 30% of degraded areas are under effective restoration" in green, followed by a paragraph: "Ensure that by 2030 at least 30 per cent of areas of degraded terrestrial, inland water, and marine and coastal ecosystems are under effective restoration, in order to enhance biodiversity and ecosystem functions and services, ecological integrity and connectivity." Below this is a section titled "Following are the guidance notes prepared by the Secretariat for Target 2" which contains a list of six items (A-F) with expandable arrows. Item A is "Why is this target important?", B is "Explanation of the target and its elements", C is "Links to other elements of the Kunming-Montreal Global Biodiversity Framework, and other frameworks and processes", D is "Guiding questions for national target-setting", E is "Indicators", and F is "Relevant resources that can assist implementation". At the bottom of the main content area is a note from the Secretariat: "This guidance material provides an overview of the target by briefly introducing key terms, highlighting some of the implications for national target setting, and providing key points and guiding questions for consideration as part of national target-setting exercises. It also identifies the adopted indicators to monitor progress and resources that could assist with national target setting and implementation. This material should be considered a work in progress." On the right side of the page, there is a "2030 Targets Quick Access" section with a grid of links for Target 1 through Target 23.

Chrome Archivo Editar Ver Historial Favoritos Perfiles Pestaña Ventana Ayuda Lun 7 ago 15:35:14

Personal Cloud Storage - Micro x Kenya NBSAP Workshop - Aug x Target 2

cbd.int/gbf/targets/2/

GBF HOME

INTRODUCTORY SECTIONS OF THE GBF

2050 VISION AND 2030 MISSION

2050 GOALS

2030 TARGETS (WITH GUIDANCE NOTES)

IMPLEMENTATION AND SUPPORT MECHANISMS

RESPONSIBILITY AND TRANSPARENCY

COMMUNICATION, EDUCATION, AWARENESS AND UPTAKE

RELATED DECISIONS

GBF HOME // TARGET 2

Target 2. 30% of degraded areas are under effective restoration

Ensure that by 2030 at least 30 per cent of areas of degraded terrestrial, inland water, and marine and coastal ecosystems are under effective restoration, in order to enhance biodiversity and ecosystem functions and services, ecological integrity and connectivity.

Following are the guidance notes prepared by the Secretariat for Target 2

- A. Why is this target important?
- B. Explanation of the target and its elements
- C. Links to other elements of the Kunming-Montreal Global Biodiversity Framework, and other frameworks and processes
- D. Guiding questions for national target-setting
- E. Indicators
- F. Relevant resources that can assist implementation

Note from the Secretariat: This guidance material provides an overview of the target by briefly introducing key terms, highlighting some of the implications for national target setting, and providing key points and guiding questions for consideration as part of national target-setting exercises. It also identifies the adopted indicators to monitor progress and resources that could assist with national target setting and implementation. This material should be considered a work in progress.

2030 Targets Quick Access

Target 1	Target 2
Target 3	Target 4
Target 5	Target 6
Target 7	Target 8
Target 9	Target 10
Target 11	Target 12
Target 13	Target 14
Target 15	Target 16
Target 17	Target 18
Target 19	Target 20
Target 21	Target 22
Target 23	

THANK YOU, PLENARY

CONSERVATION
INTERNATIONAL

